

Paper Reference(s) 1BI0/1H
Pearson Edexcel Level 1/Level 2 GCSE
(9–1)

Biology
PAPER 1
Higher tier

Diagram Booklet

In the boxes below, write your name, centre number and candidate number.

Surname					
Other names					
Centre Number					
Candidate Number					

INSTRUCTIONS

There may be spare copies of some diagrams in case you need them.

**THIS DIAGRAM BOOKLET MUST BE
RETURNED WITH THE QUESTION PAPER
AT THE END OF THE EXAMINATION.**

Contents

Page

4	Question 2(b)
5	Question 2(b) (Spare copy)
6	Question 3(a)
7	Question 4(a)
8	Question 4(b)(ii)
9	Question 6
10	Question 7(c)
11	Question 8(c)
12	Question 9
13	Question 9(b)

Question 2(b)

FIGURE 1

T	T	G	A	T	T	G	C	G	T	A	A
---	---	---	---	---	---	---	---	---	---	---	---

[illegible]

FIGURE 1

T	T	G	A	T	T	G	C	G	T	A	A
---	---	---	---	---	---	---	---	---	---	---	---

[illegible]

Question 3(a)**FIGURE 2**

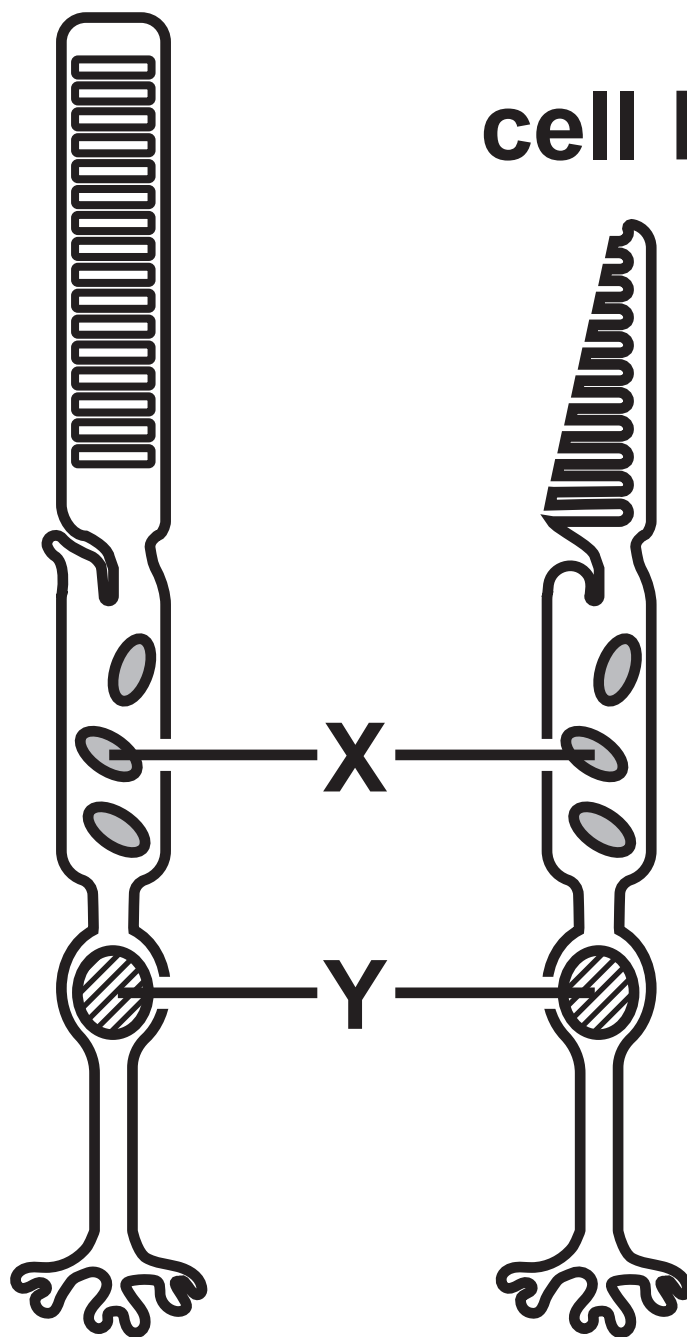
sexually transmitted infection (STI)	number of people diagnosed per 1000 of the population
chlamydia	3·7
gonorrhoea	0·8
genital herpes	0·6
genital warts	1·1
syphilis	0·1

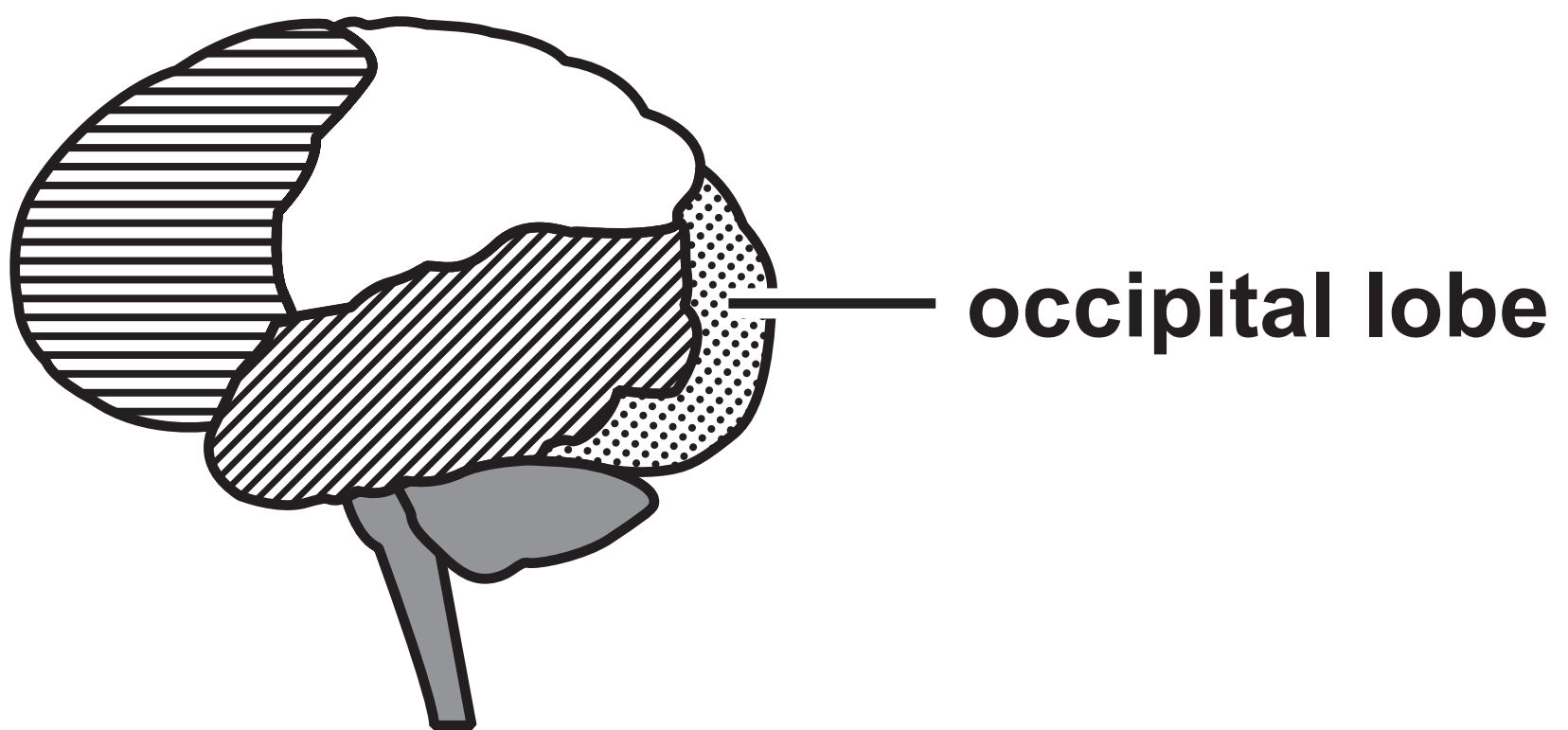
Question 4(a)

FIGURE 3

cell A

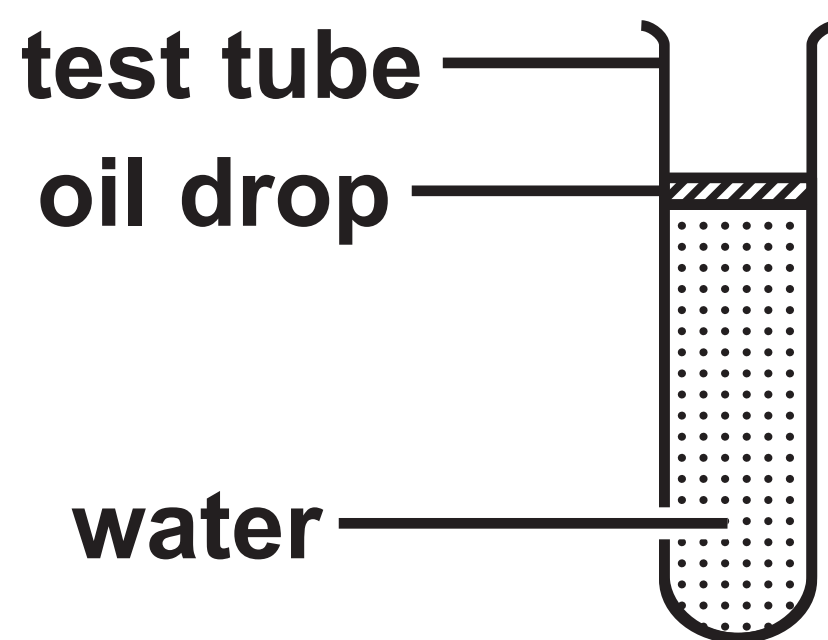
cell B



Question 4(b)(ii)**FIGURE 4**

Question 6

FIGURE 5



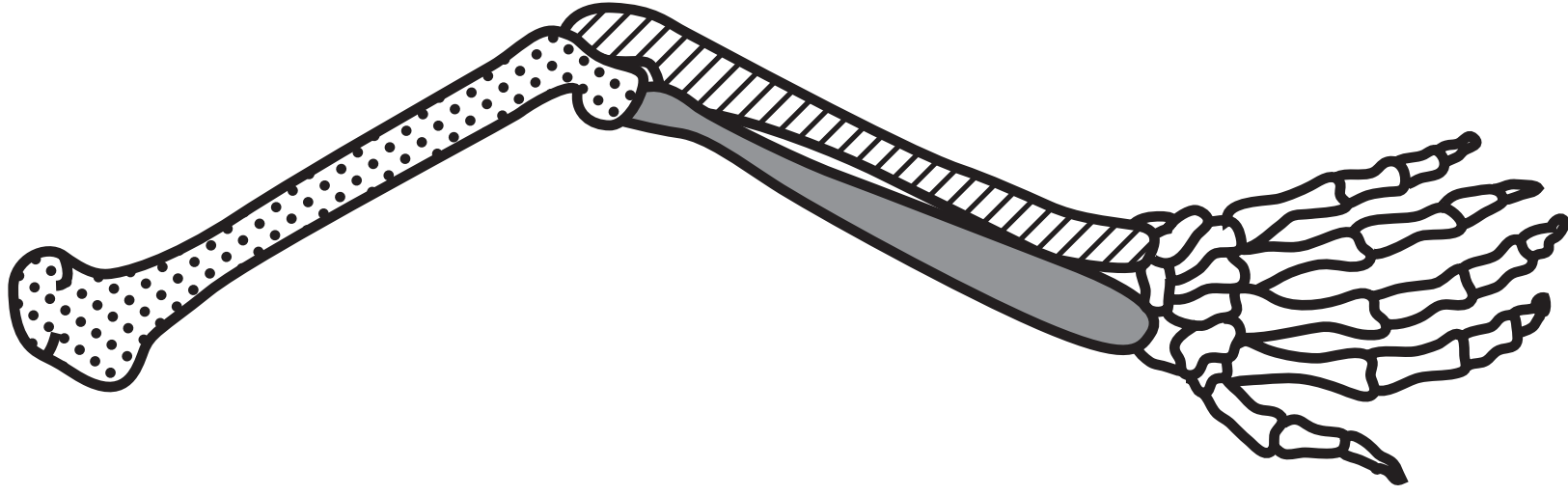
Question 7(c)

FIGURE 6

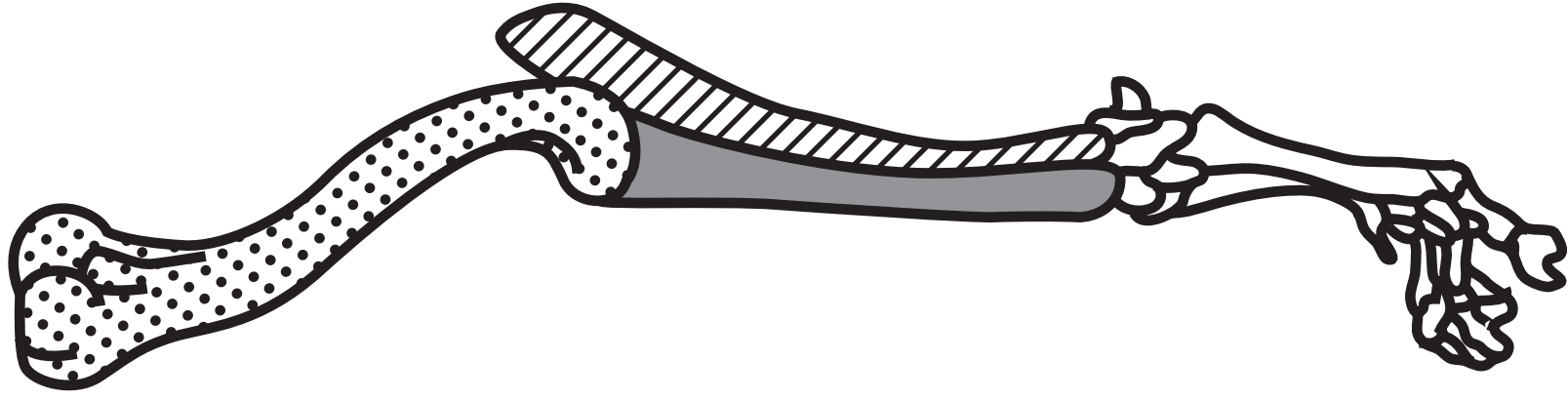
stage of cell cycle	number of cells
Interphase	44
Prophase	12
Metaphase	6
Anaphase	18
Telophase	9

FIGURE 7

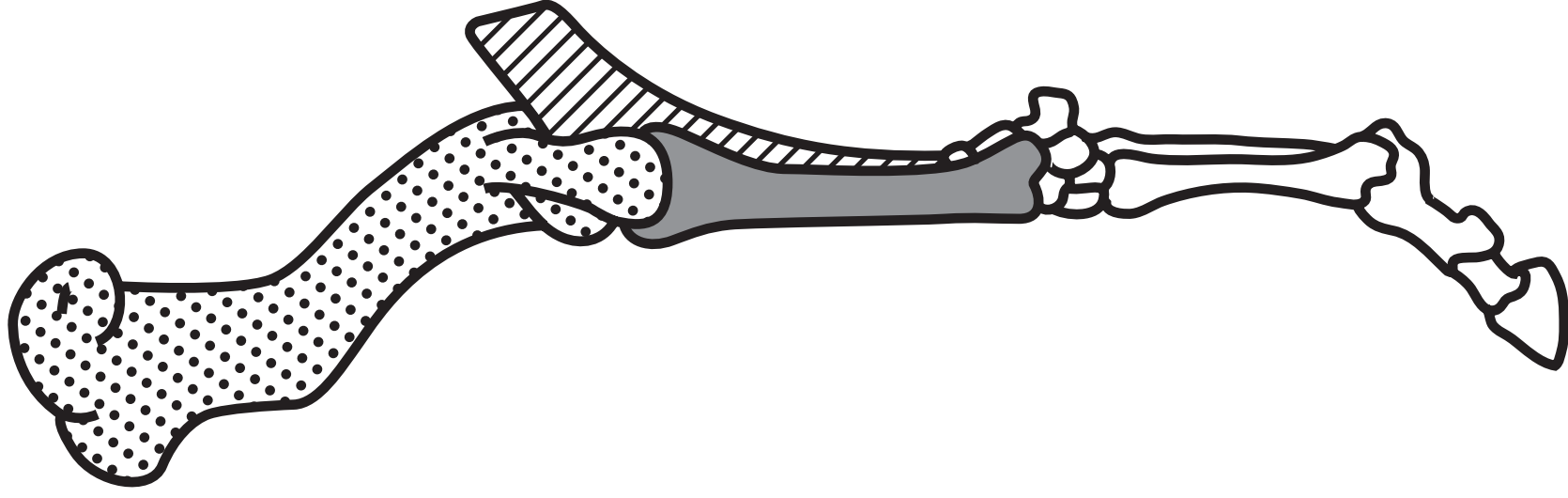
human



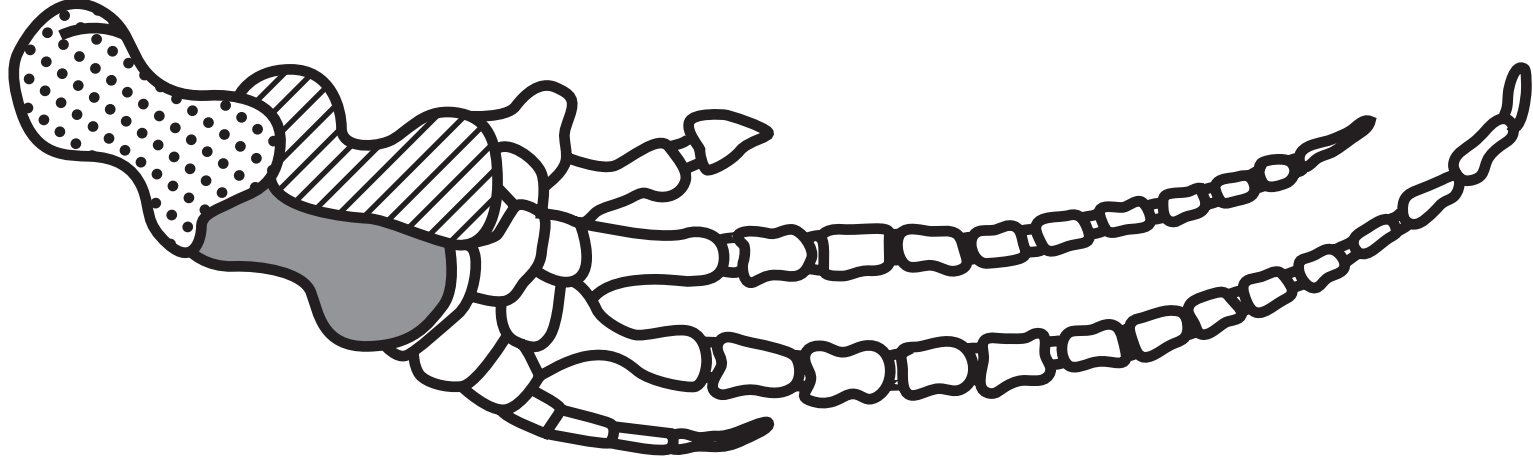
cow



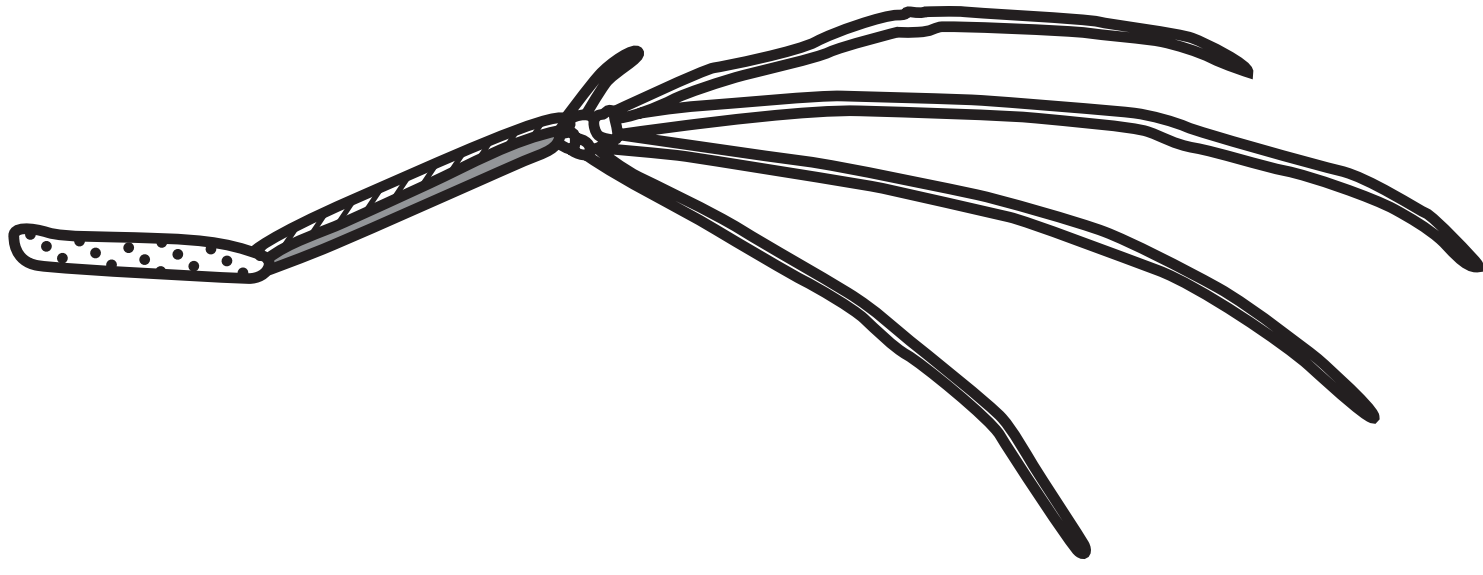
horse



whale

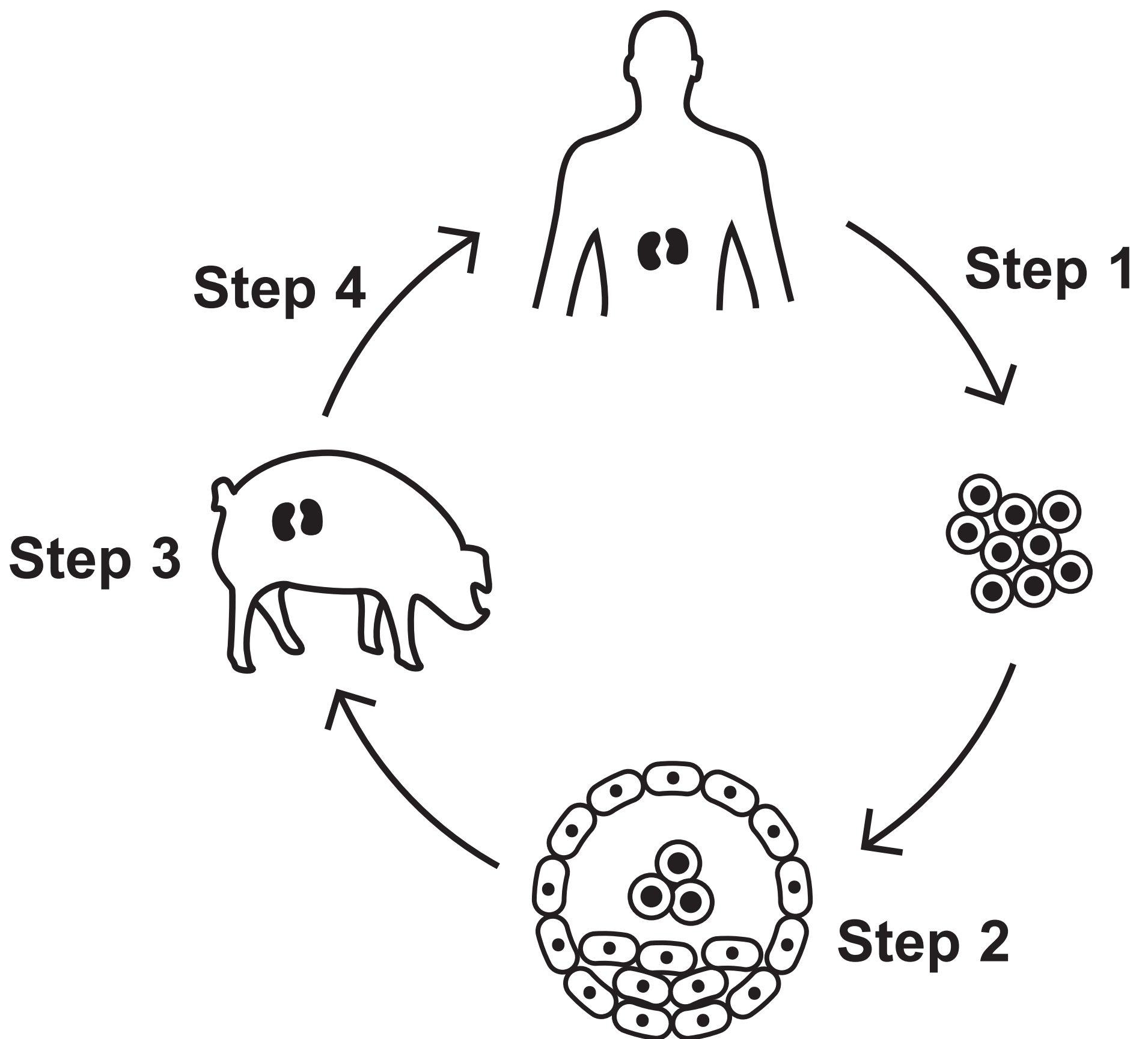


bird



Question 9

FIGURE 8



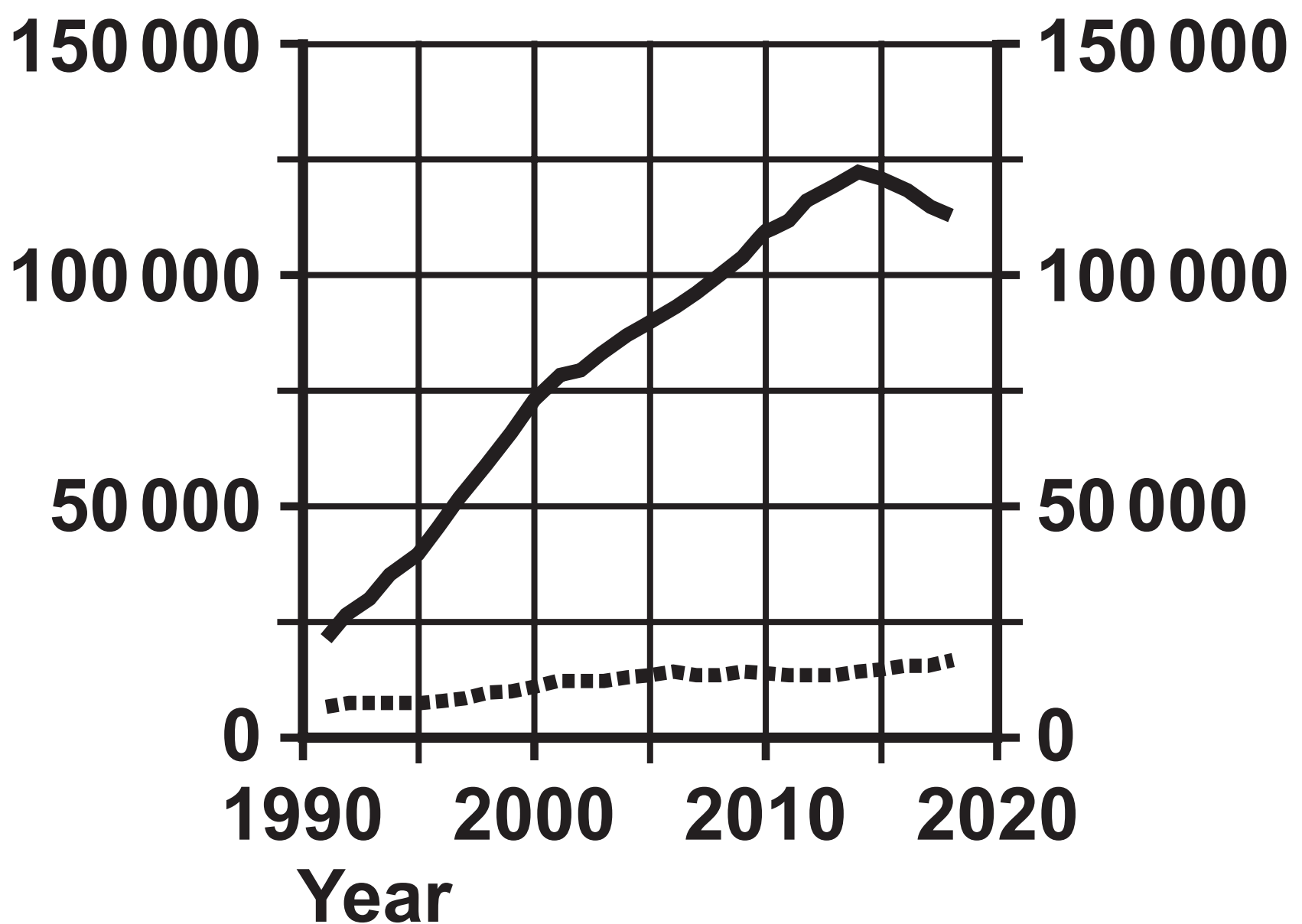
Question 9(b)

FIGURE 9

KEY

- number of organ transplants needed
- number of donors available

Number of people



Question 4(a)

**(Source adapted from: © Kokhanchikov/
Shutterstock)**

Question 4(b)(ii)

**(Source adapted from: © Magic mine/
Shutterstock)**

Question 6

**(Source adapted from: © Nana_studio/
Shutterstock)**